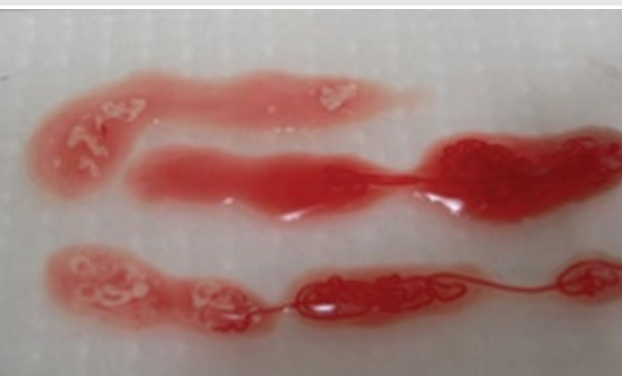


# 2019 Cook Medical Porcine EUS-guided FNA & FNB Workshop



**Sunday, 21 April 2019**

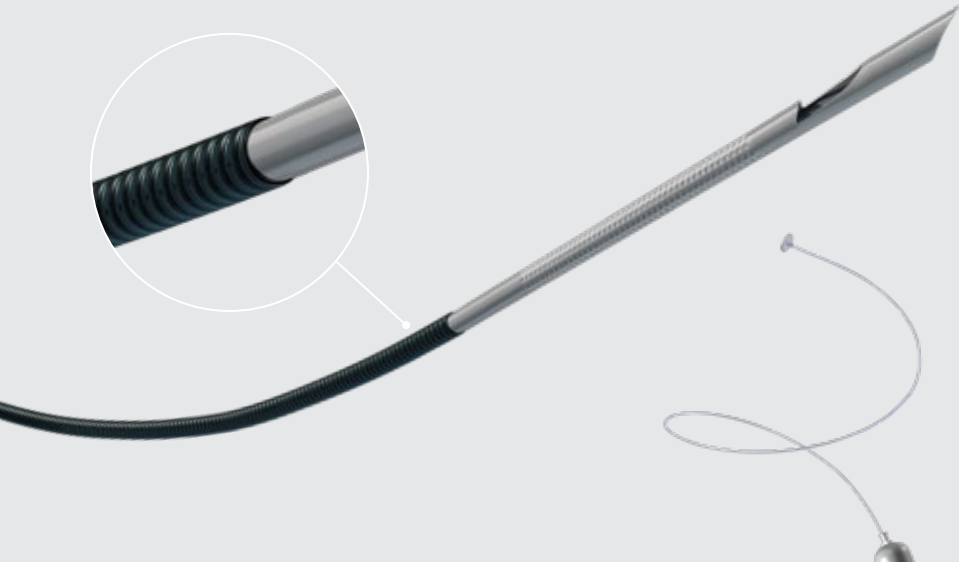
**Bai Chay Hospital**

QL279, Giếng Đáy, Thành phố Hạ Long,

Quảng Ninh, Vietnam



Obtain core biopsies in  
difficult anatomies.



## EchoTip ProCore®

HD ULTRASOUND BIOPSY NEEDLE

The 20 gauge EchoTip ProCore® needle has the flexibility to get you to even the most difficult locations. And, once you've reached the target, you can obtain core biopsies that can lead to a confident diagnosis.

**FEATURING**

ReCoil™  
Stylet



### **International Faculty**

**A/Prof. Nam Nguyen**

MBBS(Hons), FRACP, PhD

Head, Education and Research

Interventional and EUS endoscopist

Royal Adelaide Hospital

Chair, Research Committee

EUS Special Interest Group, GESA

### **Local Faculty**

**Dr. Le Thi Kim Lien**

Interventional EUS Endoscopist

Head, Endoscopy Department

Bai Chay Hospital

**Dr. Ho Dang Quy Dung**

Interventional and EUS/ERCP Endoscopist

Head, Endoscopy Department

Cho Ray Hospital

**Dr. Kieu Van Tuan**

Interventional and EUS/ERCP Endoscopist

Vice Head, Functional Exploration Department

Bach Mai Hospital

**Dr. Nguyen Lam Tung**

Interventional and EUS/ERCP Endoscopist

Vice Head, Gastroenterology Department

108 Military Central Hospital

## PROGRAM

### Sunday, 21 April 2019

---

|       |   |   |
|-------|---|---|
| 08:30 | EUS FNA/FNB: Indication and contra-indication | <i>Dr. Lien Le</i>  |
| 08:45 | EUS FNA/FNB: Techniques                       | <i>Dr. Dung Ho</i>  |
| 09:00 | EUS FNA/FNB: Needle selection                 | <i>A/Prof. Nam Nguyen</i>   |
| 09:15 | How do I process my FNA/FNB samples?          | <i>Dr. Tuan Kieu</i>  |
| 09:30 | Tea break                                     |   |
| 10:00 | Porcine EUS guided biopsy workshop            | <i>Dr. Lien Le</i><br><i>A/Prof. Nam Nguyen</i><br><i>Dr. Dung Ho</i><br><i>Dr. Tuan Kieu</i><br><i>Dr. Tung Nguyen</i> |
| 13:00 | Close   |   |

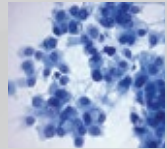




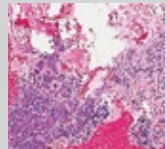
# Cytology, cell block or core: Results you can see.

EchoTip ProCore®  
HD Ultrasound  
biopsy needle

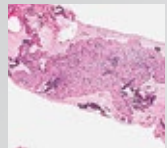
EchoTip® Ultra  
Endoscopic  
ultrasound needle



Cytology



Cell Block



Core

Balancing sample capacity and needle flexibility, Cook's EUS needles allow you to target small lesions in even the most difficult locations, while increasing valuable yields with potentially fewer needle passes.



Pathology images courtesy of James Farrell, MD  
Interventional Endoscopy and Pancreatic  
Diseases Section of Digestive Diseases,  
Yale University School of Medicine.

## Asia Pacific Customer Service

USA Website: [cookmedical.com](http://cookmedical.com)

Hong Kong Website: [cookmedical.com.hk](http://cookmedical.com.hk)

Japan Website: [cookmedical.co.jp](http://cookmedical.co.jp)

South Korea Website: [cookmedical.co.kr](http://cookmedical.co.kr)

Australia: +61 734346000, [cau.custserv@cookmedical.com](mailto:cau.custserv@cookmedical.com)

China: +86 2154519599, [chinacssupport@cookmedical.com](mailto:chinacssupport@cookmedical.com)

Hong Kong: +852 34721688, [cs.cahk@cookmedical.com](mailto:cs.cahk@cookmedical.com)

India: +91 4426793000, [india.orders@cookmedical.com](mailto:india.orders@cookmedical.com)

Japan: +81 368539470, [info-japan@cookmedical.com](mailto:info-japan@cookmedical.com)

Korea: +822 62923500, [kr.orders@cookmedical.com](mailto:kr.orders@cookmedical.com)

Malaysia: +603 79621688, [cs.malaysia@cookmedical.com](mailto:cs.malaysia@cookmedical.com)

Singapore: +65 63207678, [cooksea.cs@cookmedical.com](mailto:cooksea.cs@cookmedical.com)

Taiwan: +886 266283500, [cooktwn@cookmedical.com](mailto:cooktwn@cookmedical.com)

Thailand: +662 1688630, [th.orders@cookmedical.com](mailto:th.orders@cookmedical.com)

SADC: +65 63207600, [sadc\\_cs@cookmedical.com](mailto:sadc_cs@cookmedical.com)

